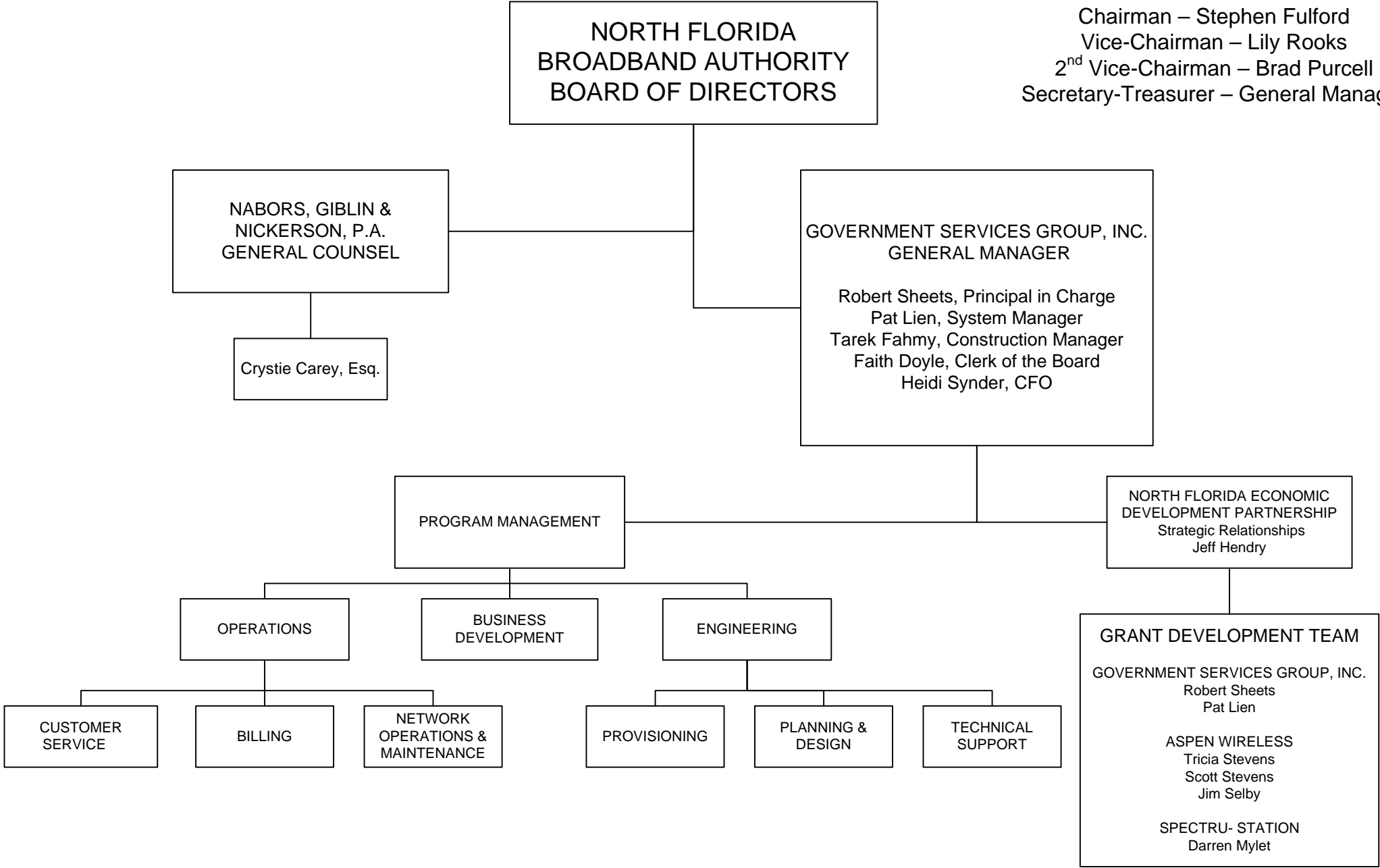


ORGANIZATION CHART

BOARD OF DIRECTORS

Officers

Chairman – Stephen Fulford
 Vice-Chairman – Lily Rooks
 2nd Vice-Chairman – Brad Purcell
 Secretary-Treasurer – General Manager



NORTH FLORIDA
 BROADBAND AUTHORITY
 BOARD OF DIRECTORS

NABORS, GIBLIN &
 NICKERSON, P.A.
 GENERAL COUNSEL

Crystie Carey, Esq.

GOVERNMENT SERVICES GROUP, INC.
 GENERAL MANAGER

Robert Sheets, Principal in Charge
 Pat Lien, System Manager
 Tarek Fahmy, Construction Manager
 Faith Doyle, Clerk of the Board
 Heidi Synder, CFO

PROGRAM MANAGEMENT

NORTH FLORIDA ECONOMIC
 DEVELOPMENT PARTNERSHIP
 Strategic Relationships
 Jeff Hendry

OPERATIONS

BUSINESS
 DEVELOPMENT

ENGINEERING

GRANT DEVELOPMENT TEAM

GOVERNMENT SERVICES GROUP, INC.
 Robert Sheets
 Pat Lien

ASPEN WIRELESS
 Tricia Stevens
 Scott Stevens
 Jim Selby

SPECTRU- STATION
 Darren Mylet

CUSTOMER
 SERVICE

BILLING

NETWORK
 OPERATIONS &
 MAINTENANCE

PROVISIONING

PLANNING &
 DESIGN

TECHNICAL
 SUPPORT